



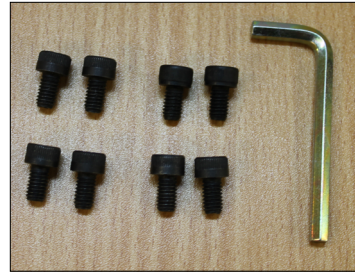
Standard Slat Bed Instructions



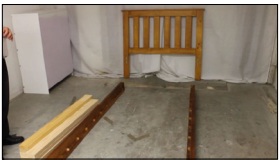
Free phone: 0800 22 22 10
www.furnituretree.co.nz



Step 1.
Open all packages and identify that you have 2 side rails, 1 head, and a pack of slats.



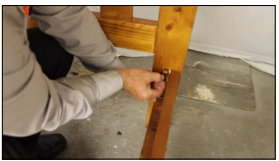
Step 2.
Hardware pack should include 8x bolts and 1x Allen Key.



Step 3.
Line up parts. Be sure the correct side of the side rails face inwards to receive the slats.



Step 4.
Bring joins together. Your Side rail may have a slight bow. In this case you will need to apply some pressure to bring the two fittings into line.



Step 5.
Fit 2 bolts into each corner of the rail. Sometimes you will need to jiggle them a bit to get them to go in. Tighten with Allen key.



Step 6.
Place the slats into the spaces.

To find Centre Rail instructions or to find video instructions go here:

<http://furnituretree.co.nz/index.php/help-faq>